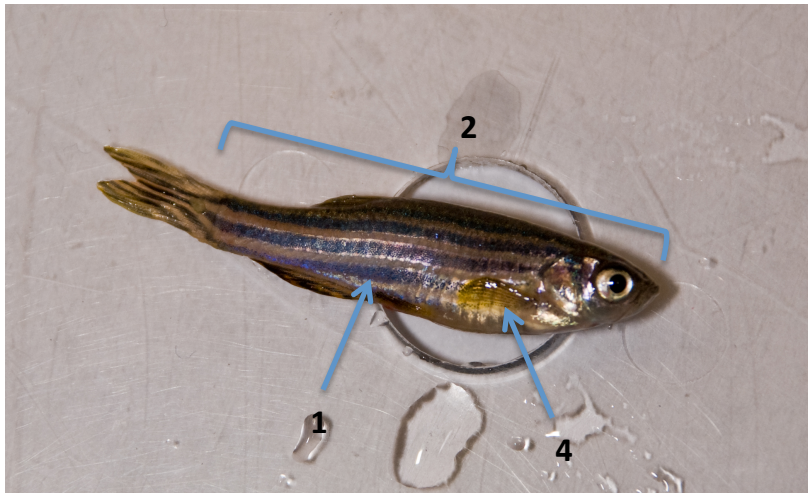


Sex Determination of Zebrafish

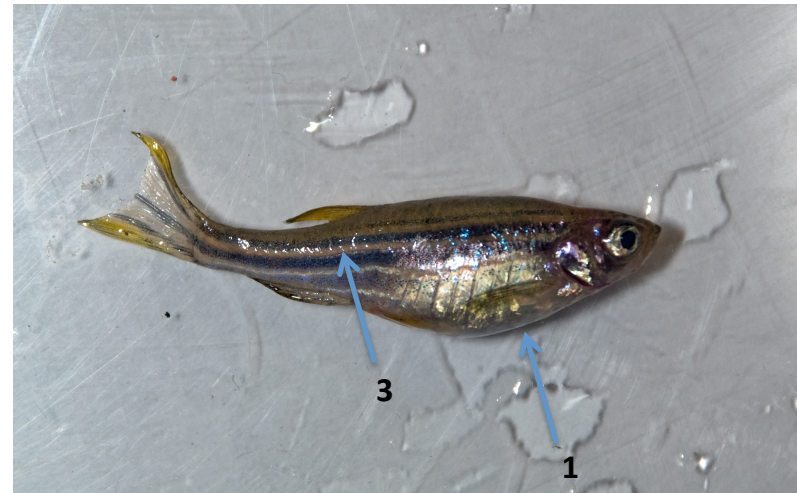
Male Zebrafish



Male Characteristics

1. Darker blue stripes
2. More stream-lined body type
3. Tend to be more active
4. Have a pinkish-yellow cast
5. More golden, especially on the ventral fins

Female Zebrafish



Female Characteristics

1. White, protruding belly
2. Have a bluish-white cast
3. Silver stripes between blue stripes

How to Identify Sex in Zebrafish

Identifying Males



The typical body shape of a male zebrafish is very slender compared to that of the female. Males tend to be much more active than female zebrafish. They also appear to be more gold or yellow in color than females on the ventral side of their body (belly).

Identifying Females



Females have much more distinct characteristics than males because of their enlarged bellies where eggs are stored. Females tend to move a bit slower than males. Females can also be distinguished from males by a silvery-blue streak on the lateral side of the body.

Gender Identification Guide

Identifying male and female zebrafish is an important skill to have, especially when setting up mating tanks. Because males and females look very similar, it's often difficult to tell them apart. Listed below are some helpful guidelines to follow when determining whether a zebrafish is male or female.

Characteristics of Male Zebrafish

- darker body coloring than females¹
- more yellow/brown contrast body-stripping than females¹
- flat, slender belly on ventral surface¹
- dark yellow tint to underside of fins¹



Photo credit: Kimberly Halverson

Characteristics of Female Zebrafish

- lighter body coloring than males¹
- larger body than males, on average
- round belly on ventral surface¹



Photo credit: Kimberly Halverson

¹ Schilling, T.F. (2002). *Zebrafish: A practical approach*. New York, NY: Oxford University Press.

Gender Identification Activity

Question: Can you identify the gender of the zebrafish in the picture below?



Photo credit: Kimberly Halverson

Answer:

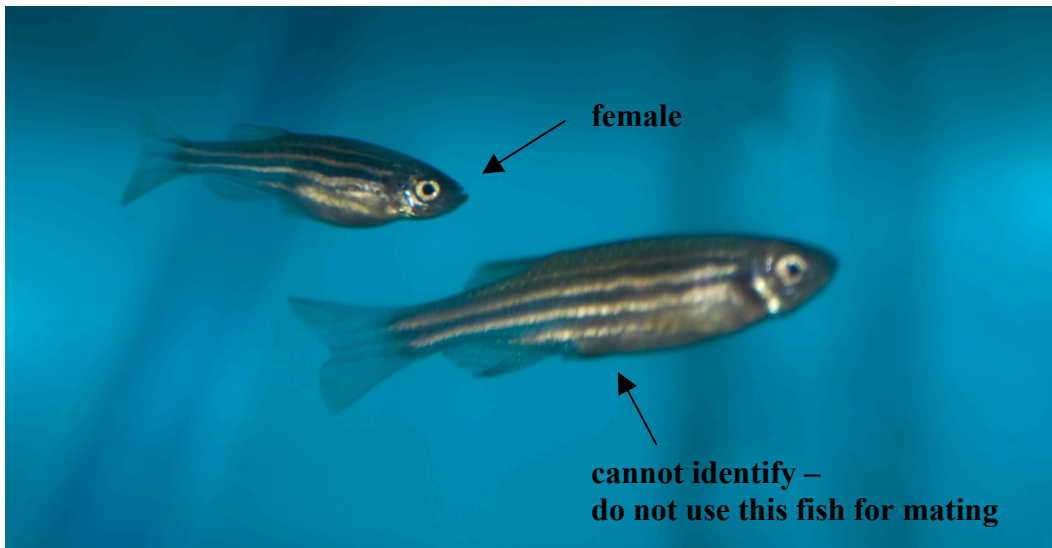


Photo credit: Kimberly Halverson